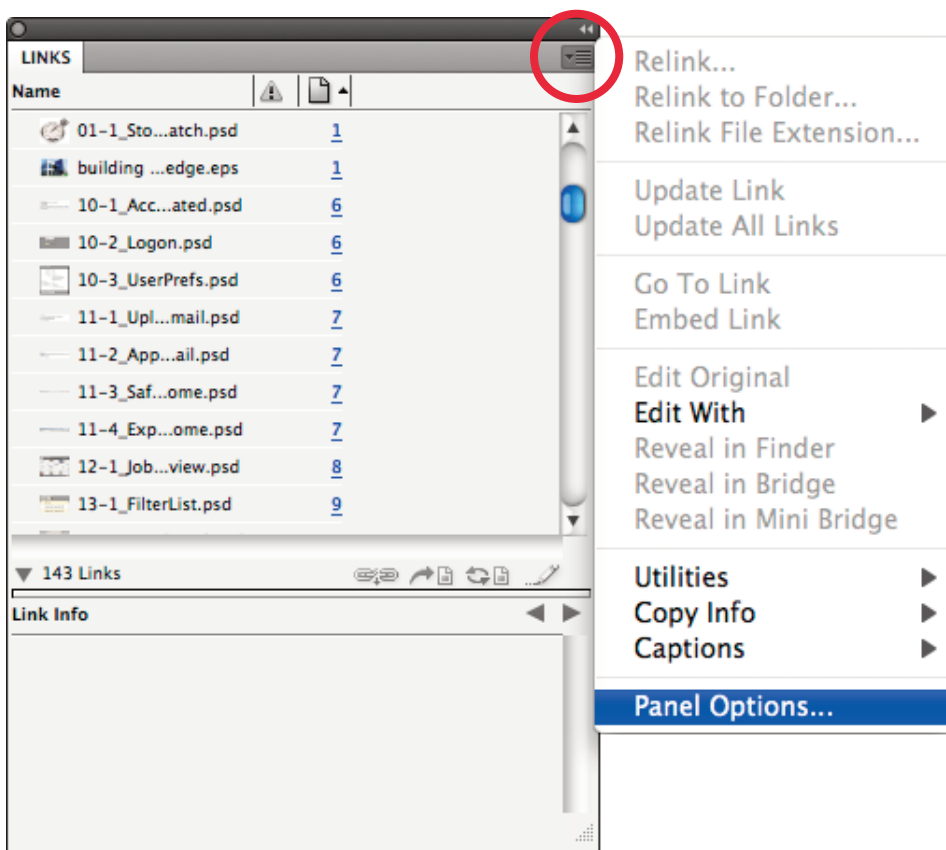


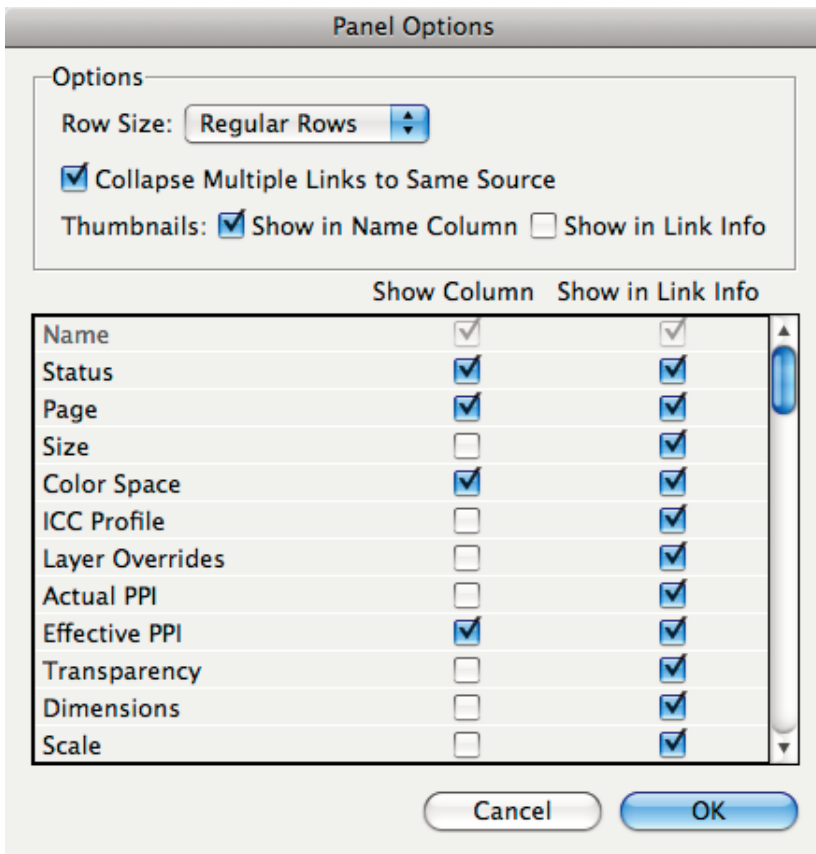
Adobe InDesign - Links Panel Options

Beginning with InDesign CS4, Adobe added a useful feature to the Links panel that may not be well known. With a few mouse clicks, you can have InDesign display a host of additional information about each and every graphic and image placed in an InDesign document! Let's take a look:

1. In InDesign, pull down the **Window** menu and choose **Links**.
2. In the Links panel, click the panel menu icon and choose **Panel Options...**



3. In the **Panel Options** window, you can select all the information you would like to see about each graphic or image placed in your InDesign documents (as is applicable):

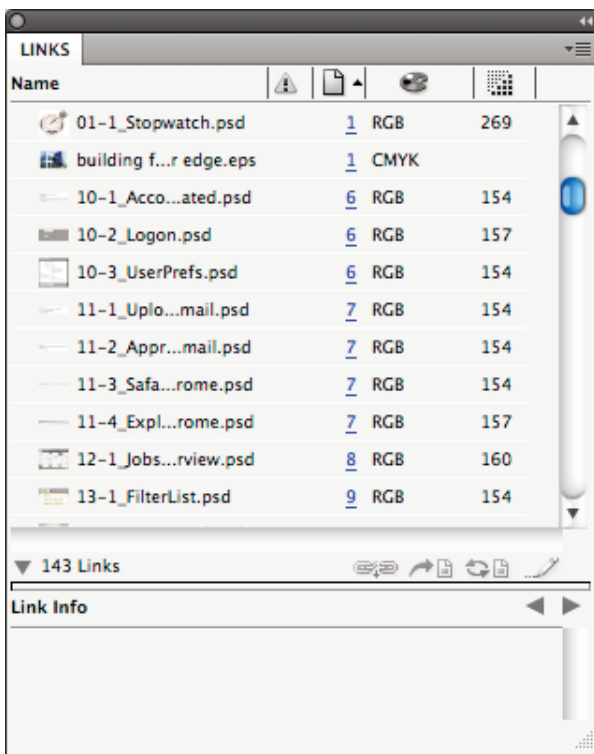


4. Out of the box, InDesign will display **Status** and **Page** number for each graphic and image placed in your document.

We recommend adding **Color Space**, and **Effective PPI**.

5. Click **OK**.

6. With the above settings, you'll now be able to easily spot images that use a non-standard color space (RGB for example) or that have a resolution that may yield undesirable results on press. Recall that effective PPI is the resolution of an image after has been stretched or reduced from its original size. Although still printable, an effective PPI below 150 should be avoided if possible for color and grayscale images. Below 600 for black and white images.



Hopkins Printing

For questions, feel free to contact:

Jon Morgan

614-509-1080

jmorgan@hopkinsprinting.com