

Adobe InDesign CS6 - CC 2015 - Live Preflight

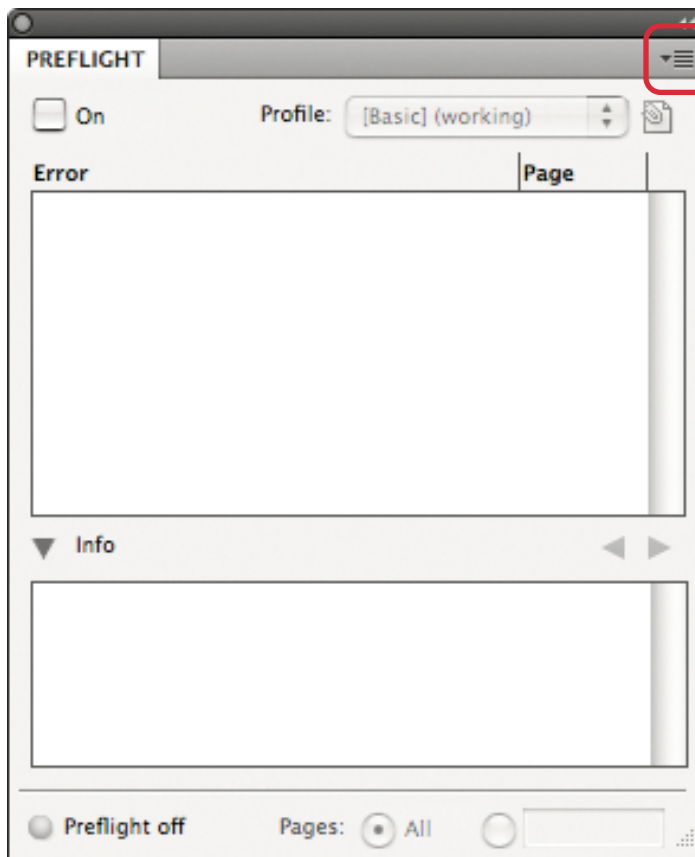
Beginning with CS4, InDesign has the ability to perform live preflight on your InDesign documents as you construct them. This is accomplished via Preflight Profile. An InDesign Preflight Profile contains user-configurable settings that instruct InDesign what to watch for while the document is being constructed. If a page element conflicts with the specifications of the Preflight Profile, a warning is displayed. As every print service provider has different needs, the use of a Preflight Profile helps avoid printing issues thus saving time and money. For best results, use this document in combination with our document on how to properly export a PDF from InDesign.

Preflight Profile

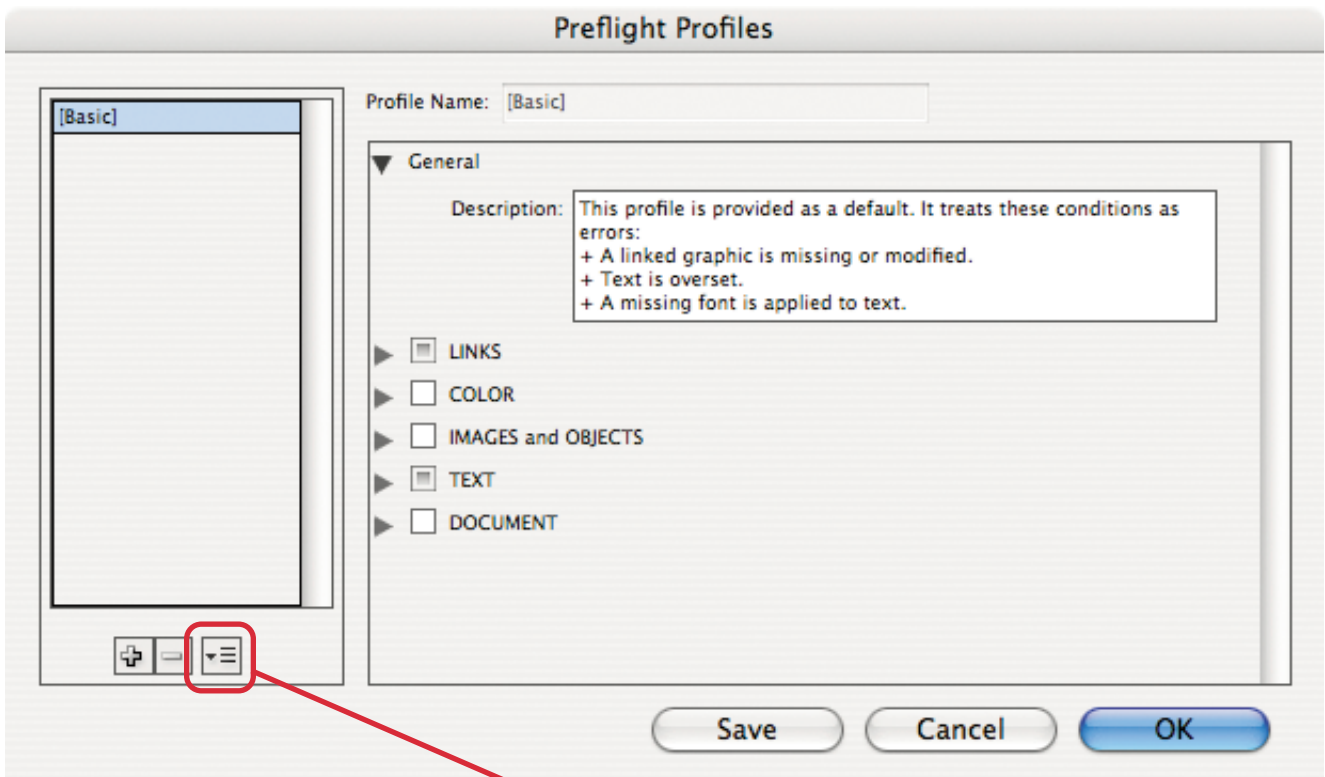
Before you begin, you will need to download the Hopkins Printing Preflight Profile from our website and save it to the Mac OS X or Windows desktop (unzip the Profile before continuing).

Configuring InDesign for Live Preflight

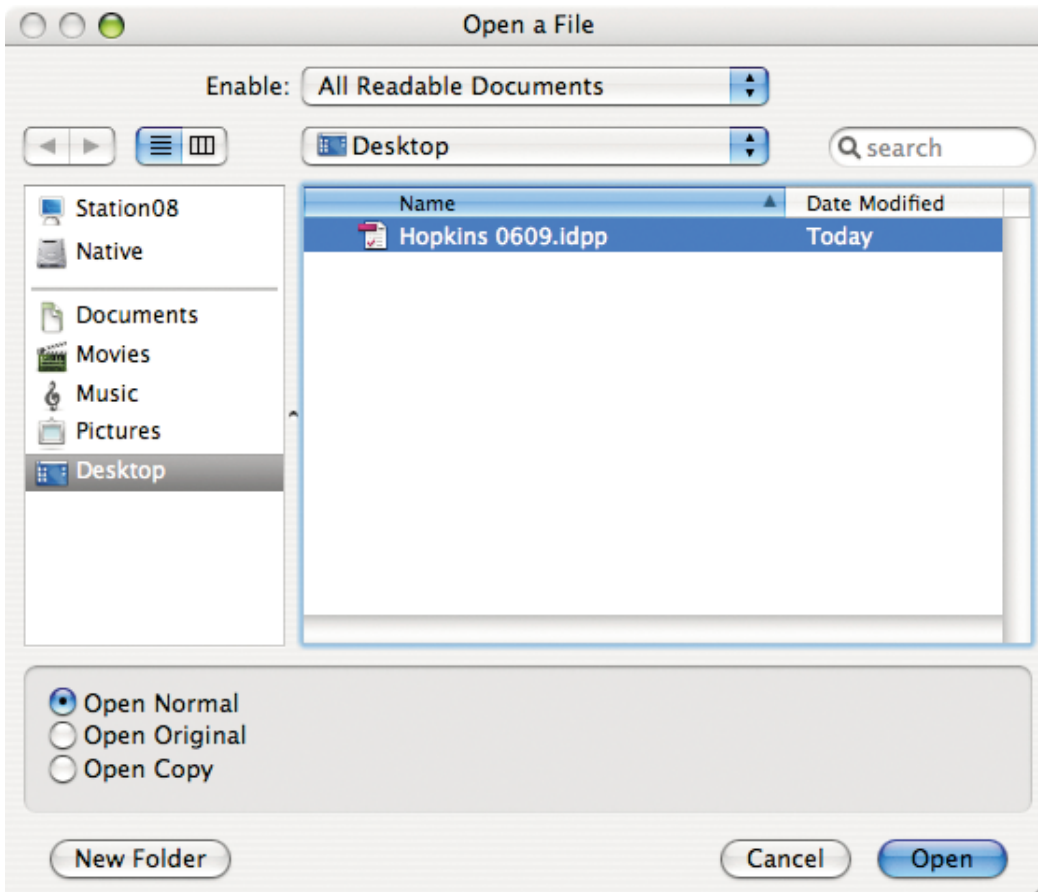
1. Open **InDesign**.
2. Ensure no InDesign documents are open (not even a blank one).
3. Pull down the **Window** menu and choose **Output -> Preflight**. The following window appears:



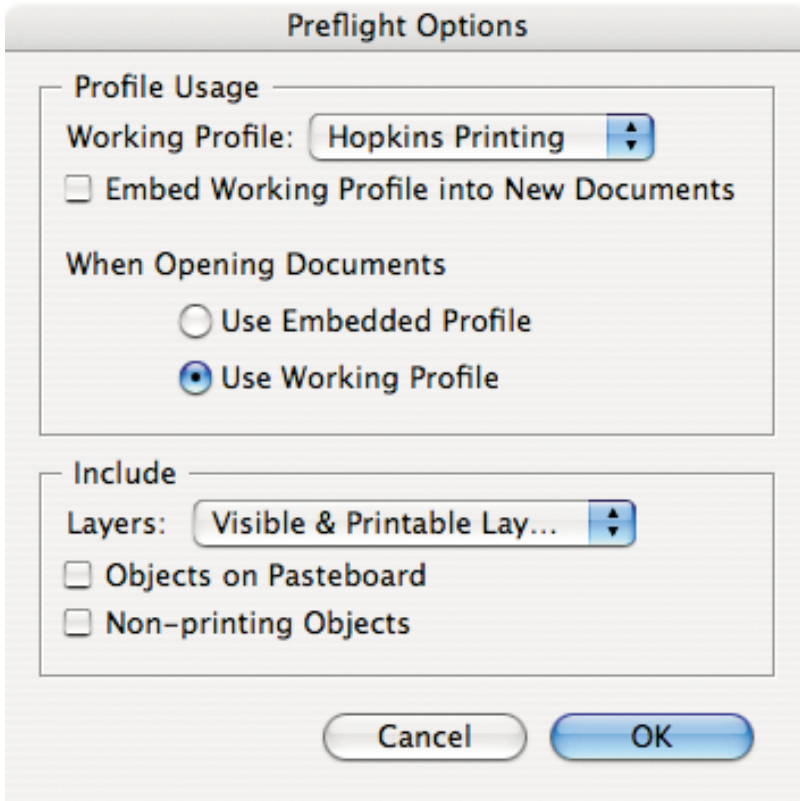
4. Click the **contextual menu** icon in the upper right corner of the **Preflight** panel and ensure that **Enable Preflight for All Documents** is checked.
5. Click the contextual menu again and choose **Define Profiles...**



6. In the window above, click the **profile contextual menu** and choose **Load Profile...**
7. Navigate to the desktop and choose the unzipped **Preflight Profile** (it will have a .idpp file extension) you downloaded from our website and click **Open**:



- Click **OK**.
- Click the **contextual menu** icon in the upper right corner of the **Preflight** panel again and choose **Preflight Options**:



Select **Hopkins Printing**

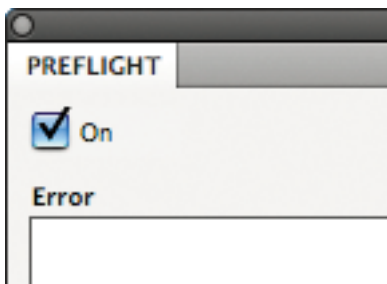
Select **Use Working Profile**

Select **Visible & Printable Layers**

Uncheck **Objects on Pasteboard** and **Non-printing Objects**

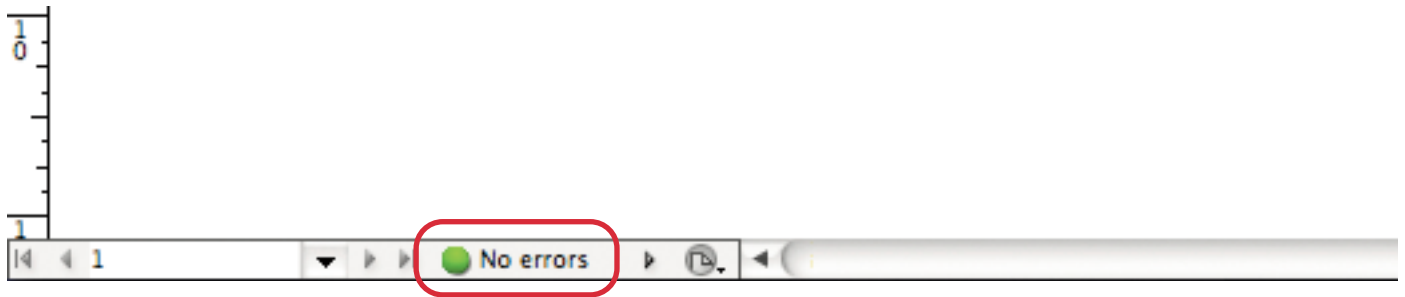
Click **OK**

- Activate Preflight by clicking the **On** checkbox in the **Preflight** panel:



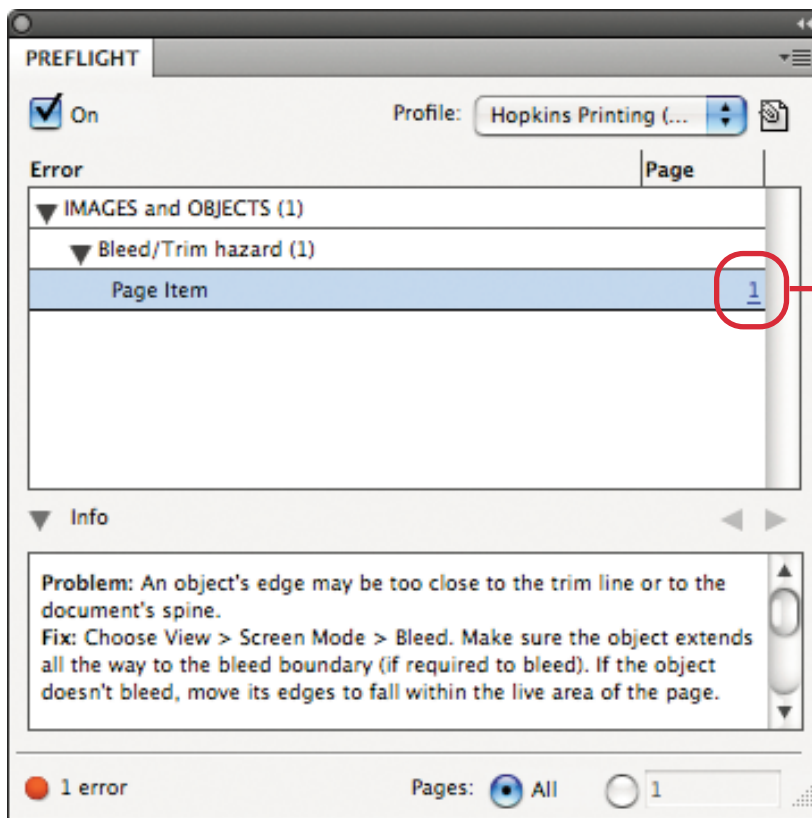
- With all configuration completed, using the chosen Preflight Profile from step #9 above, InDesign should perform live preflight on each document you open or construct.
- Let's see how it works. Open an InDesign document you've already constructed.
- You are probably wondering how to know if a document has any preflight errors:

Simply look in the lower left corner of the InDesign document window:



In the above example, InDesign is showing **No errors** indicating that the document appears to be free of any preflight issues based on the specifications of the active preflight profile. However, if errors do exist, the **number** of error(s) will be displayed instead of **No errors**.

To see detailed information about the error(s), use the **Preflight** panel (**Window** menu -> **Output** -> **Preflight**):



In the example above, Preflight is indicating a problem with an item on page 1 and provides a brief description of the problem as well as a suggestion for resolving it.

Click the **page number hyperlink** to be taken to the offending page item:



For questions, feel free to contact:

Jon Morgan

614-509-1080

jmorgan@hopkinsprinting.com